

Contents

1	Installing firmware	1
1.1	Using Windows	1
1.2	Using OS X	3
2	Version history	5
2.1	FW 108 (04.08.15)	5
2.2	FW 107 (05.10.14)	5
2.3	FW 106 (27.09.14)	5
2.4	FW 095 (01.05.14)	5

1 Installing firmware

Connect a cable between your computer's *MIDI Out* and *MIDI In* of your SP MIDI. To load firmware turn on the SP MIDI while holding down the *REC MODE* button. The LEDs will start blinking.

A thirdparty tool is required to transfer the firmware. Different applications are used depending on operating system. The firmware is contained in .syx fileformat available at our website.

1.1 Using Windows

Download and install MIDI-OX from <http://www.midiox.com/moxdown.htm>. Open MIDI-OX and select the right MIDI output device under *Options* -> *MIDI Devices*. Next open *SysEx View* under *View* -> *SysEx...* In the *Sysex* -> *Configure* dialog check "Delay After F7" and select at least 60 milliseconds. *Low Level Output Buffers* should be set to *Size* 514 bytes and *Num* 32.

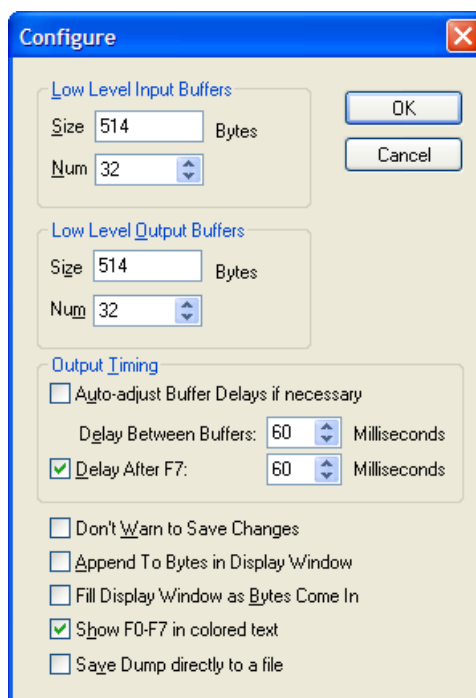


Figure 1: MIDI-OX SysEx configuration

Now open the firmware file from the SysEx view. The file starts sending immediately.

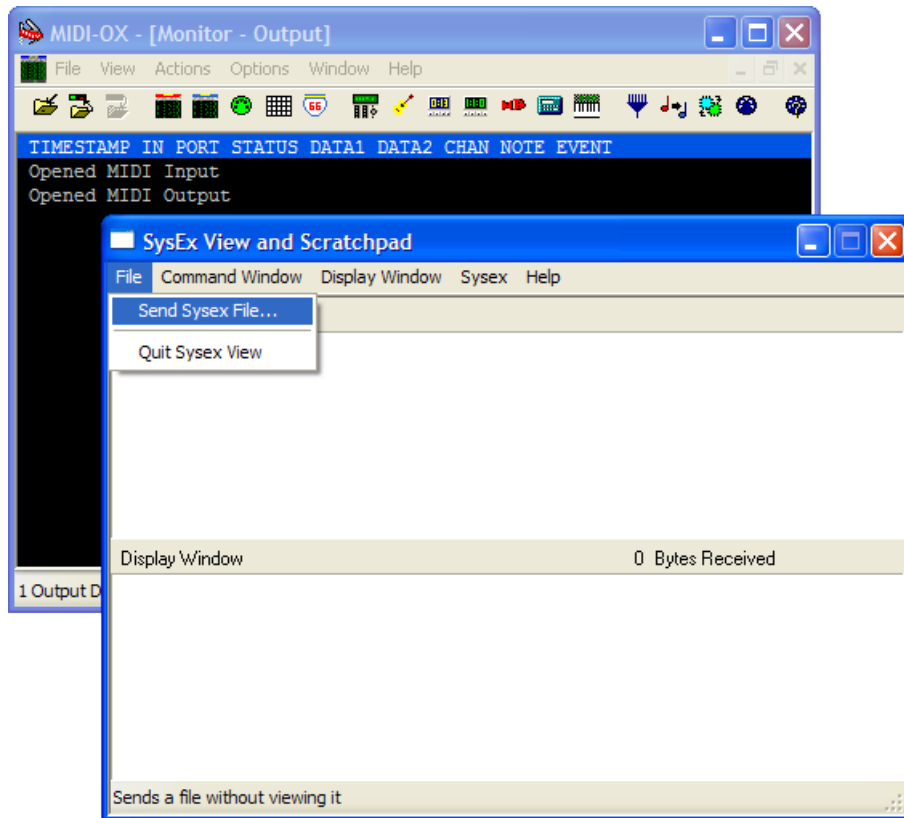


Figure 2: SysEx View open file

If the transfer is successful the SP MIDI will restart in normal mode. If not, LEDs stop blinking and light up constantly. In that case restart the installation process.

1.2 Using OS X

Download and install SysEx Librarian from Snoize: <http://www.snoize.com/SysExLibrarian/>. Now open the application and *Preferences* under *Sysex Librarian* at the task bar. Make sure the parameter "Pause between played messages" is set to 60 milliseconds or more.

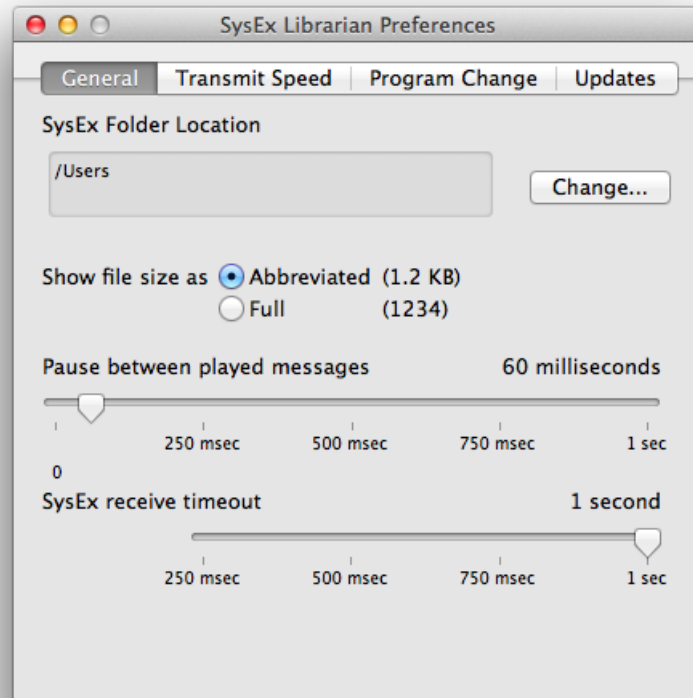


Figure 3: SysEx Librarian preferences

Make sure the correct MIDI interface is selected, add the firmware file and hit play.

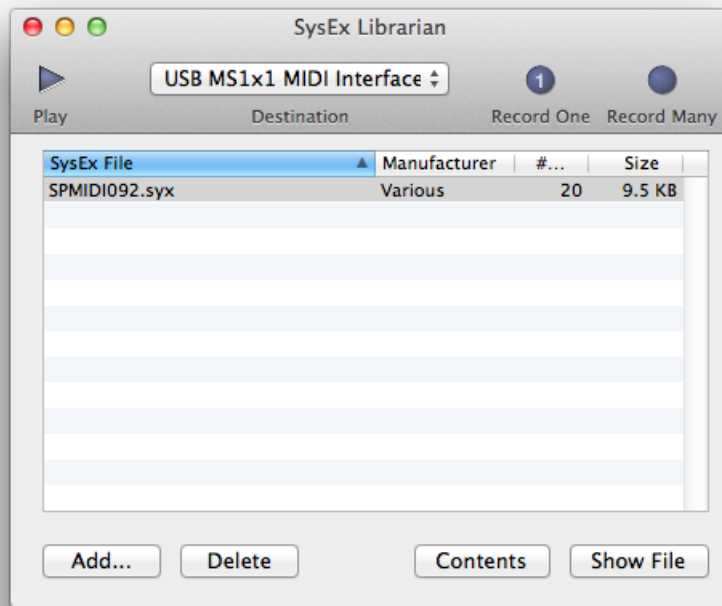


Figure 4: SysEx file playlist

If the transfer is successful the SP MIDI will restart in normal mode. If not, LEDs stop blinking and light up constantly. In that case restart the installation process.

2 Version history

2.1 FW 108 (04.08.15)

- Fixes issue changing MIDI channel.

2.2 FW 107 (05.10.14)

- Fixes hanging notes, when switching rec mode live.

2.3 FW 106 (27.09.14)

- D1-D6 oneshot mode
- Multiple samples/octaves

2.4 FW 095 (01.05.14)

- Pad D1-D6 is sent on a second MIDI channel. Double tapping turns note off.
- CC# 71 controls velocity.
- A1-C8 is sent on a third MIDI channel.

Contact us

OTBelectronics

Asker, Norway

+47 91 81 40 40

post@otbelectronics.com

www.otbelectronics.com